

Allen XL5000

Thermal transfer printing

we mark your products.



Industrial workhorse for direct printing

- Maximum print message capabilities including barcodes, text, graphics
- Flexible system controls – adjust printer settings and print messages with user friendly controller or remotely from a PC
- Real-time, and dynamic date coding
- Intermittent and continuous printing capabilities – easily switch between intermittent and continuous modes with a simple conversion kit

Simplified serviceability design

- Small, compact size for maximum compatibility with popular frame sizes
- Easy to integrate with labelling and packaging machines
- Extended up-time between ribbon changes with ribbon capacity of up to 900 m
- Robust, industrial materials for durable performance in an industrial environment



ALLEN CODING
A DIVISION OF ITW

Allen XL5000



Printer	Allen XL5000
Print area (H × W) intermittent	53 × 80 mm
Print area (H × W) continuous	53 × 300 mm
Print speed intermittent	min. 75 mm/sec – max. 400 mm/sec
Print speed continuous	min. 4.5 m/min – max. 24 m/min
Performance IM at 5 mm print height	450 prints per minute
Performance CM at 5 mm print height	250 prints per minute
Print resolution	300 dpi
Dimensions printer (H × W × D)	178 × 212 × 244 mm
Weight	8 kg
Max. ribbon length	800 m (up to 900 m depending on ribbon type), 92 mm max. outside diameter
Ribbon type	outside coated
Ribbon width	55 mm
Air pressure	5 bar
Operating environment	5-40 °C, humidity 20-75 % non-condensing
IP rate	IP 20
Standard and opposite version	✓
a touch compatible	✓
a touch-Lite compatible	✓
Voltage	100–240 V
Frequency	50–60 Hz
Current	2A
Features / Print format	
Automatic functions	Real time, various date formats (with offset), counter, variable field, formula
Fonts	3 Internal fonts (New Gothic Bold compatibility font, Swiss 721 Bold, Swiss 721 Roman), mirror print, up to 12 fonts expandable by the customer
Internal barcodes	2/5 interleaved, Code39, UPC, EAN8, EAN13, Code93, DUN14, Code128, EAN128, Databar, Databar truncated/limited/stickered/omnidirectional, Data matrix, GS1-Datamatrix
Host line connections	
Communication	Ethernet, RS232
General error	✓
Inhibit	✓
Print on cycle	✓
Encoder signal	✓
Alarm beacon	✓



Films and Frames

Films

Allen Coding thermal transfer ribbons have been specifically developed for thermal transfer printers and produce highest quality images, even in high-speed printing. Different combinations of waxes and resins, the composition of which is co-ordinated with the respective material to be printed on, are used to produce print images with a high scratch-resilience and durability in every application. With our large range, Allen Coding is also able to deliver special colours. Our expert team should be able to find the perfect solution for your specific application. Extensive experience in the coding industry, as well as close co-

operation with our ITW sister companies, enables us to offer you many different products and services from a single source.

Custom Frame Design

If we do not already have a frame assembly suited to meet your specific application requirements from our extensive installation portfolio, we are able to offer a custom design and manufacturing service using the latest in 3D modelling software.



Control- and design-software

Allen Coding offers software solutions for printer control and print image design appropriate for most coding applications. If you need customised software solutions, please contact us.

Control-software

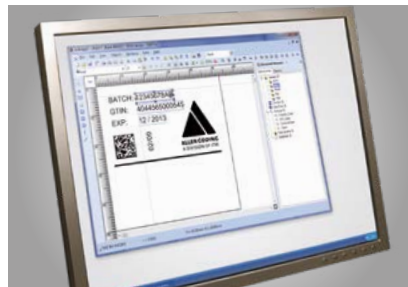
a:control is our printer operation platform software developed by Allen Coding. With a:control you are able to supervise your user and permission management, save your data and configure up to 10 printers in your network.



Design-software

a:design2

Our label design software poses no limitations related to product marking and network requirements.



Even complex print images can be designed and transferred to the printer with ease. Multiple printers can be set up in a network environment very quickly due to the well structured configuration tools implemented in a:design2.



Control Units



Control Unit	a:touch Lite	a:touch 2
Touch screen size	7 inch	10,1 inch
Resolution	1024 × 600 pixel	1024 × 600 pixel
Dimensions (W x H x D)	247 × 135 × 42 mm	331 × 196 × 42 mm
Weight	1.4 kg	2.4 kg
Ethernet		1 × 10/100/1000 Mbit
USB2.0	1	1
RS232		2
Electrical connection	One connection cable with the printing system for communication and power supply, 5V, max. 2A	110V – 240V, 50/60 Hz, 12 V (DC)
Consumption		max. 1.5A
IP	IP 20	IP 20
Operating environment	5-40 °, humidity 5 – 90 % non-condensing	5-40 °, humidity 5 – 90 % non-condensing

a:touch Lite

- Modern and fast touch interface featuring a:control software
- Industrial, stainless steel housing
- Print preview capability
- Security settings with password level protection for operators, managers, and maintenance level users
- Supports multiple languages: English, French, German, Italian, Spanish, Dutch, Portuguese and more
- Universal font compatibility including Unicode characters and the ability to import custom fonts
- Secure connection for power and data

a:touch2

- Flexible solution to control your NGT-, XL- and LT-printing systems through the software a:control
- Control of various printing systems or printer groups in your network
- Robust design suits industrial needs
- Easy handling of touch IPC via a bright 10.1" colour display
- Multilingual user interface with coloured icons



Deutschland

Allen Coding GmbH
Friedrich-Bergius-Ring 30
D-97076 Würzburg
Tel.: +49 (0) 931 25076-0

United Kingdom

ITW
Unit 9, Gateway 1000,
Whittle Way, Arlington Business Park,
Stevenage, Hertfordshire SG1 2FP
Tel.: +44 (0) 1438 347 770

www.AllenCoding.com

