

we mark your products.

NGT Series

Thermal transfer printing



For brilliant prints in small and big print areas

Outstanding performance in thermal transfer printing

- Brilliant print quality and high print performance with small font sizes
- Unique print area of up to 21 x 15 cm in intermitted mode

Flexible and easy to integrate

- Compact and light weight design
- Easily switch between intermitted mode and continuous mode via software (no remodeling)
- Controll up to 10 NGTs over a:touch2 or PC
- IQ/OQ- documents available for all printers

“Made in Germany”

- Development and production in Germany
- Own software and data base development
- Ribbon test center for best print quality on your substrate



ALLEN CODING
A DIVISION OF ITW



| Printer | NGT2+ | NGT4+ |
|--|----------------------------------|----------------------------------|
| Print area (H × W) intermittent ¹ | max. 53 × 75 mm | max. 107 × 90 mm |
| Print speed intermittent | min. 50 mm/sec – max. 600 mm/sec | min. 50 mm/sec – max. 500 mm/sec |
| Performance at 5mm print height (Prints per Min) | 650 | 550 |
| Print area (H × W) continuous ¹ | max. 53 × 1000 mm | max. 107 × 1000 mm |
| Print speed continuous | min. 3 m/min – max. 35 m/min | min. 3 m/min – max. 29 m/min |
| Print resolution 12dots/mm (300dpi ²) | ✓ | ✓ |
| Dimensions printer (H × W × D) | 213 × 202 × 208 mm | 213 × 202 × 263 mm |
| Weight (kg) | 8 | 9,5 |
| Max. 450m ribbon length at 4,5 micron | ✓ | ✓ |
| Max. 600m ribbon length at 4,5 micron | | |
| Air pressure 1,5 -5 bar | ✓ | ✓ |
| Environment 5 – 40 °C, humidity 20 – 75 % non condensing | ✓ | ✓ |
| IP Rate | IP 20 (Power supply IP 65) | IP 20 (Power supply IP 65) |
| Inverted version available | ✓ | ✓ |
| a:touch compatible | ✓ | ✓ |
| Control unit with or without touch screen | | |
| Communication interface | Ethernet, RS232, USB | |

Features / Print format

| | |
|---------------------|--|
| Automatic functions | Real time, various date formats (with offset), counter variable field, formula |
| Fonts | 7 internal fonts (OCRA, OCRB, Gill Bold, Helvetica Medium, Century Gothic, Arial Bold, |
| Internal Barcodes | GS1-Datamatrix, Datamatrix (ECC200), GS1-128, EAN 13, EAN 8, UPC-A, UPC-E, Code39, |

Host line connections

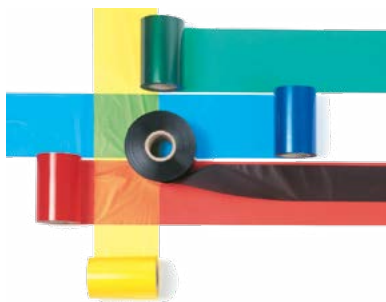
| | | |
|----------------|---|---|
| General error | ✓ | ✓ |
| Inhibit | ✓ | ✓ |
| Low ribbon | ✓ | ✓ |
| Print on Cycle | ✓ | ✓ |
| Trigger | ✓ | ✓ |
| Reset | ✓ | ✓ |
| Ribbon out | ✓ | ✓ |
| Encoder signal | ✓ | ✓ |

¹ Tolerances apply | ² approximately

Films and Frames

Films

Allen Coding thermal transfer ribbons have been specifically developed for thermal transfer printers and produce highest quality images, even in high-speed printing. Different combinations of waxes and resins, the composition of which is coordinated with the respective material to be printed on, are used to produce print images with a high scratch-resilience and durability in every application. With our large range, Allen Coding is also able to deliver special colours. Our expert team should be able to find the perfect solution for your specific application. Extensive



experience in the coding industry, as well as close cooperation with our ITW sister companies, enables us to offer you many different products and services from a single source.

Custom Frame Design

If we do not already have a frame assembly suited to meet your specific application requirements from our





| NGT6 | NGT6e | NGT8 | NGT8e |
|-----------------------------------|-----------------------------------|-----------------------------------|-----------------------------------|
| max. 160×100 mm | max. 160×155 mm | max. 213×100 mm | max. 213×155 mm |
| min. 50 mm/sec – max. 300 mm/sec. | min. 50 mm/sec – max. 300 mm/sec. | min. 50 mm/sec – max. 250 mm/sec. | min. 50 mm/sec – max. 250 mm/sec. |
| 320 | 320 | 300 | 300 |
| max. 160×1000 mm | N/A | max. 213×1000 mm | N/A |
| min. 3 m/min – max. 17 m/min. | N/A | min. 3 m/min – max. 14 m/min. | N/A |
| ✓ | ✓ | ✓ | ✓ |
| 216×202×283 mm | 216×262×283 mm | 216×202×337 mm | 216×262×337 mm |
| 11,6 | 14 | 14,2 | 15 |
| ✓ | | ✓ | |
| | ✓ | | ✓ |
| ✓ | ✓ | ✓ | ✓ |
| ✓ | ✓ | ✓ | ✓ |
| IP 20 | IP 20 | IP 20 | IP 20 |
| ✓ | | ✓ | |
| ✓ | ✓ | ✓ | ✓ |
| ✓ | ✓ | ✓ | ✓ |



(alphanumerisch), variable Felder, Formeln, shift code

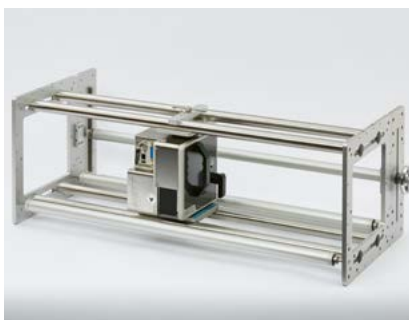
Arial Medium) to be turned in steps of 90°, up to 50 fonts expandable by the customer

Code 2/5 Interleaved, ITF14, QR Code, PDF417, Hanxin

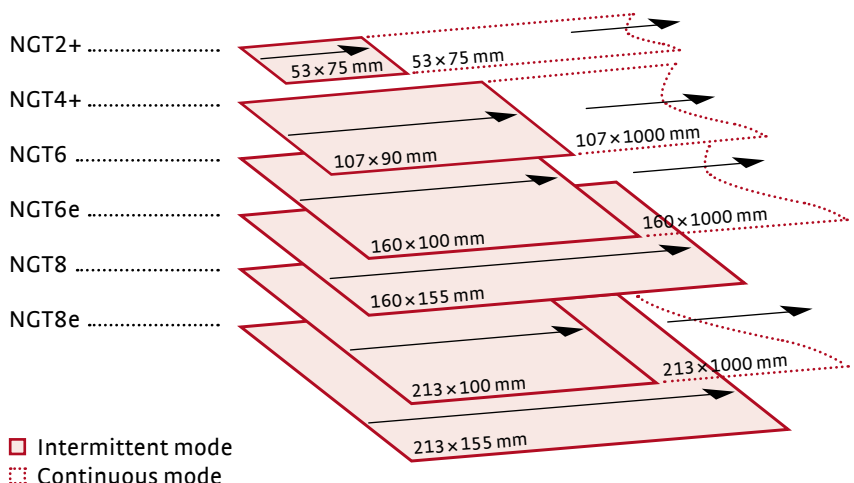


| | | | |
|---|---|---|---|
| ✓ | ✓ | ✓ | ✓ |
| ✓ | ✓ | ✓ | ✓ |
| ✓ | ✓ | ✓ | ✓ |
| ✓ | ✓ | ✓ | ✓ |
| ✓ | ✓ | ✓ | ✓ |
| ✓ | ✓ | ✓ | ✓ |
| ✓ | ✓ | ✓ | ✓ |
| ✓ | ✓ | ✓ | ✓ |

extensive installation portfolio, we are able to offer a custom design and manufacturing service using the latest in 3D modeling software.



Maximum print area



Control Units



| Control Unit | NGT control unit | a:touch 2 |
|------------------------|--|--|
| Touch screen size | 5,5 inch | 10,1 Inch |
| Resolution | 240 x 128 pixel | 1024 x 600 pixel |
| Dimensions (W x H x D) | 335 x 141 x 228 mm | 331 x 196 x 42 mm |
| Weight (kg) | 6,6 | 2,4 |
| Ethernet | 1 x 10/100 Mbit | 1 x 10/100/1000 Mbit |
| USB2.0 Typ A | 1 | 1 |
| RS232 | 1 | 2 |
| Electrical connection | 110V–240V, 50/60 Hz | 110V–240V, 50/60 Hz, 12 V (DC) |
| Consumption | max. 1,7A | max. 1.5A |
| IP Rate | IP 40 | IP 20 |
| Operating environment | 5–40 °C, humidity 20–75 % non condensing | 5-40 °, humidity 5–90 % non condensing |

Control- and design-software

Allen Coding offers software solutions for printer control and print image design appropriate for most coding applications. If you need customized software solutions, please contact us.

Control-software

a:control

a:control

a:control is our printer operation platform software developed by Allen Coding. With a:control you are able to supervise your user and permission management, save your data and configure up to 10 printers in your network.



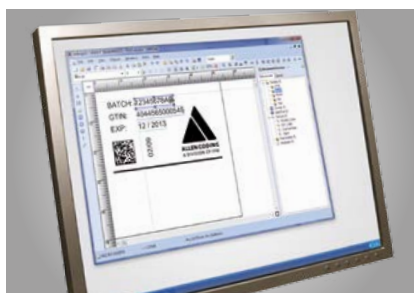
Design-software

Our label design software poses no limitations related to product marking and network requirements.

a:design2

a:design2

a:design2 is state-of-the-art software for print image design by Allen Coding. It's simple and intuitive interface allows quick and highly professional design of print images.



Even complex print images can be designed and transferred to the printer with ease. Multiple printers can be set up in a network environment very quickly due to the well structured configuration tools implemented in a:design2.

Codesoft

CODESOFT

With its new and progressive design for simple application, the label generation software CODESOFT offers unprecedented flexibility, performance and global support. It is a good choice for professional applications in industrial environments.

Nicelabel

NiceLabel

Nicelabel is a design software that allows direct printing out of Windows Programs such as Word, Paint or Excel.



ALLEN CODING
A DIVISION OF ITW

Deutschland

Allen Coding GmbH
Friedrich-Bergius-Ring 30
D-97076 Würzburg
Tel.: +49 (0) 931 25076-0

United Kingdom

ITW
Unit 9, Gateway 1000,
Whittle Way, Arlington, Business Park,
Stevenage, Hertfordshire SG1 2FP
Tel.: +44 (0) 1438 347770

www.AllenCoding.com

